

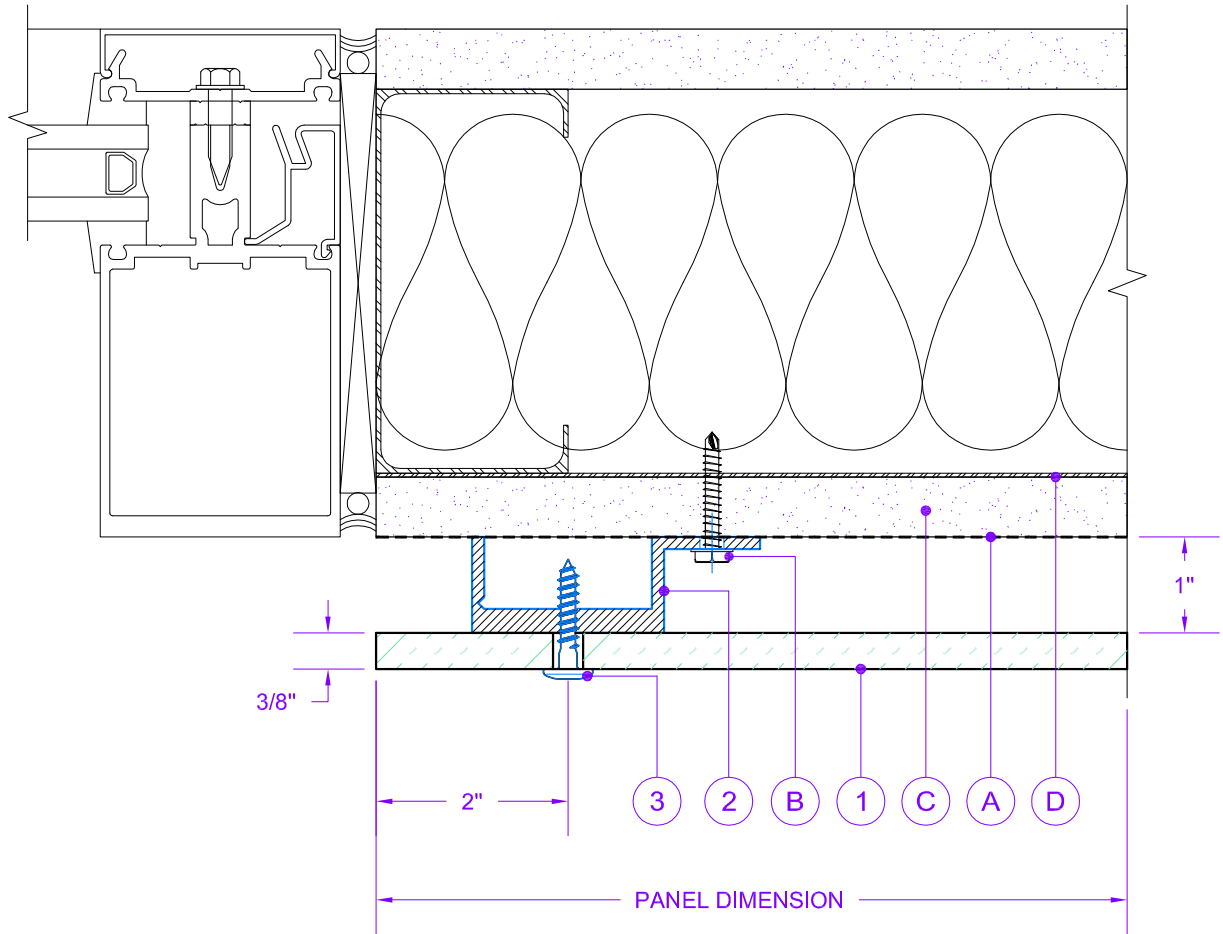
NO.:	DESCRIPTION:
1	TRESPA METEON PANEL (5/8", 3/16" 1/4")
2	J-CHANNEL
3	PANEL FASTENER
A	APPROVED WRB
B	CHANNEL ANCHOR
C	SHEATHING
D	STEEL BACKING PLATE



ALTIIUM BUILDING CORPORATION
 #103 - 19110 24 Avenue, Surrey, BC V3S 3S9
 T: 604.574.1233 F: 604.560.9554 E: info@altiumbuildingcorp.com
 www.altiumbuildingcorp.com

DRAWING TITLE:
 TYPICAL DOOR JAMB

DETAIL NO.:
 1 OF 17



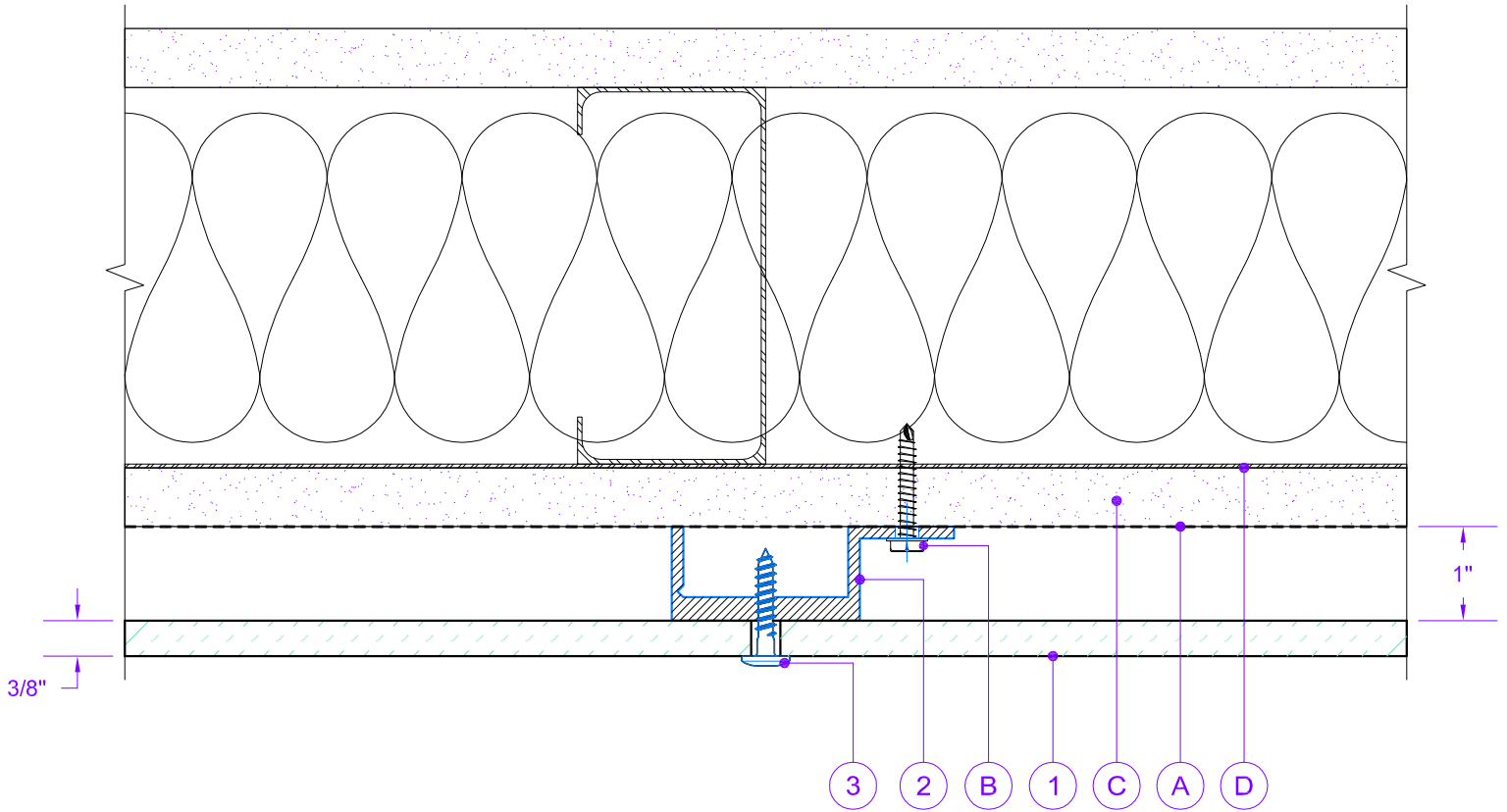
NO.:	DESCRIPTION:
1	TRESPA METEON PANEL (5/8", 3/16" 1/4")
2	J-CHANNEL
3	PANEL FASTENER
A	APPROVED WRB
B	CHANNEL ANCHOR
C	SHEATHING
D	STEEL BACKING PLATE



#103 - 19110 24 Avenue, Surrey, BC V3S 3S9
 T: 604.574.1233 F: 604.560.9554 E: info@altiumbuildingcorp.com
 www.altiumbuildingcorp.com

DRAWING TITLE:
 WINDOW JAMB

DETAIL NO.:
 2 OF 17



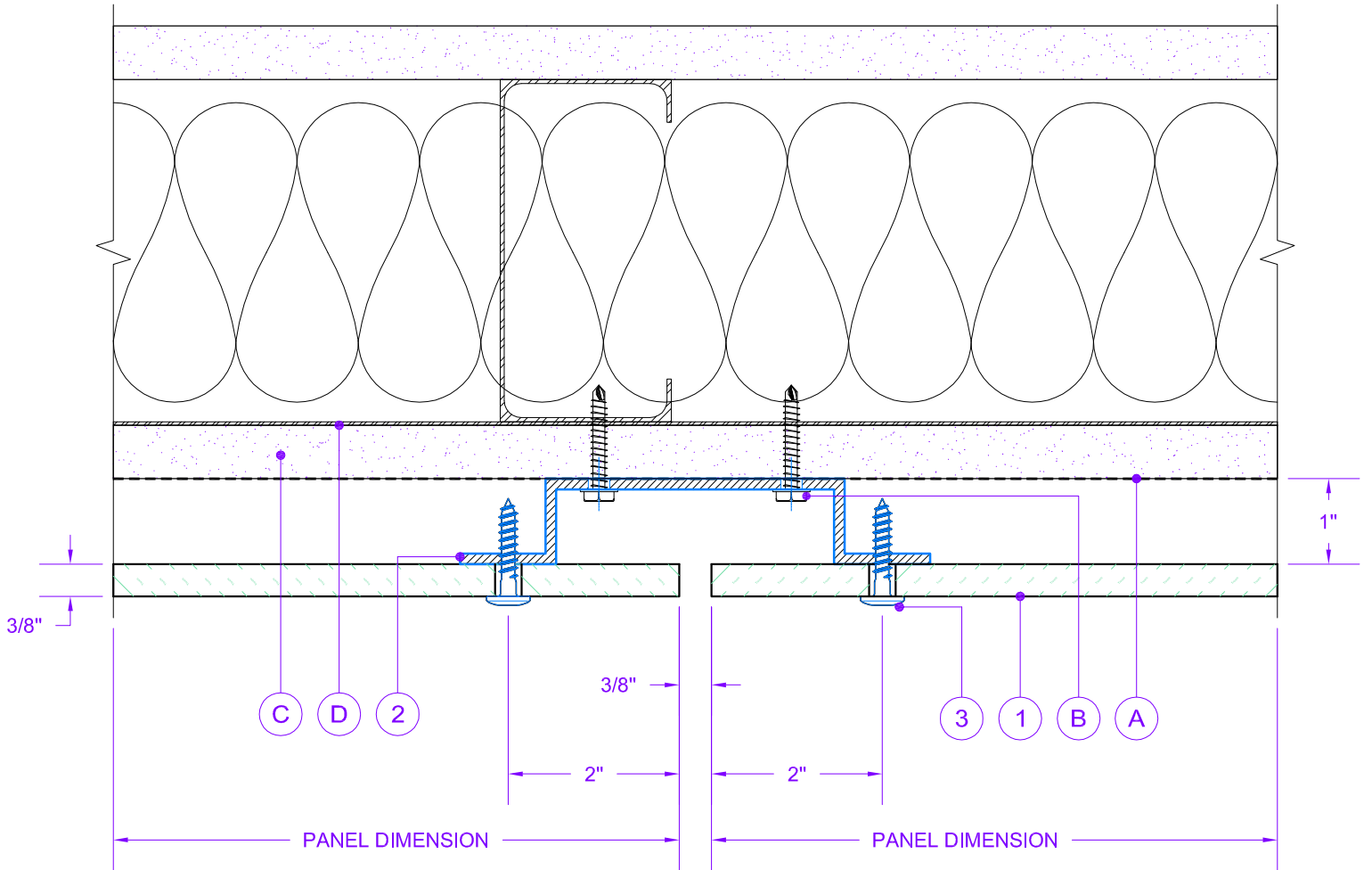
NO.:	DESCRIPTION:
1	TRESPA METEON PANEL (5/8", 3/16" 1/4")
2	J-CHANNEL
3	PANEL FASTENER
A	APPROVED WRB
B	CHANNEL ANCHOR
C	SHEATHING
D	STEEL BACKING PLATE



ALTIIUM BUILDING CORPORATION
 #103 - 19110 24 Avenue, Surrey, BC V3S 3S9
 T: 604.574.1233 F: 604.560.9554 E: info@altiumbuildingcorp.com
 www.altiumbuildingcorp.com

DRAWING TITLE:
 VERTICAL MID PANEL

DETAIL NO.:
 3 OF 17



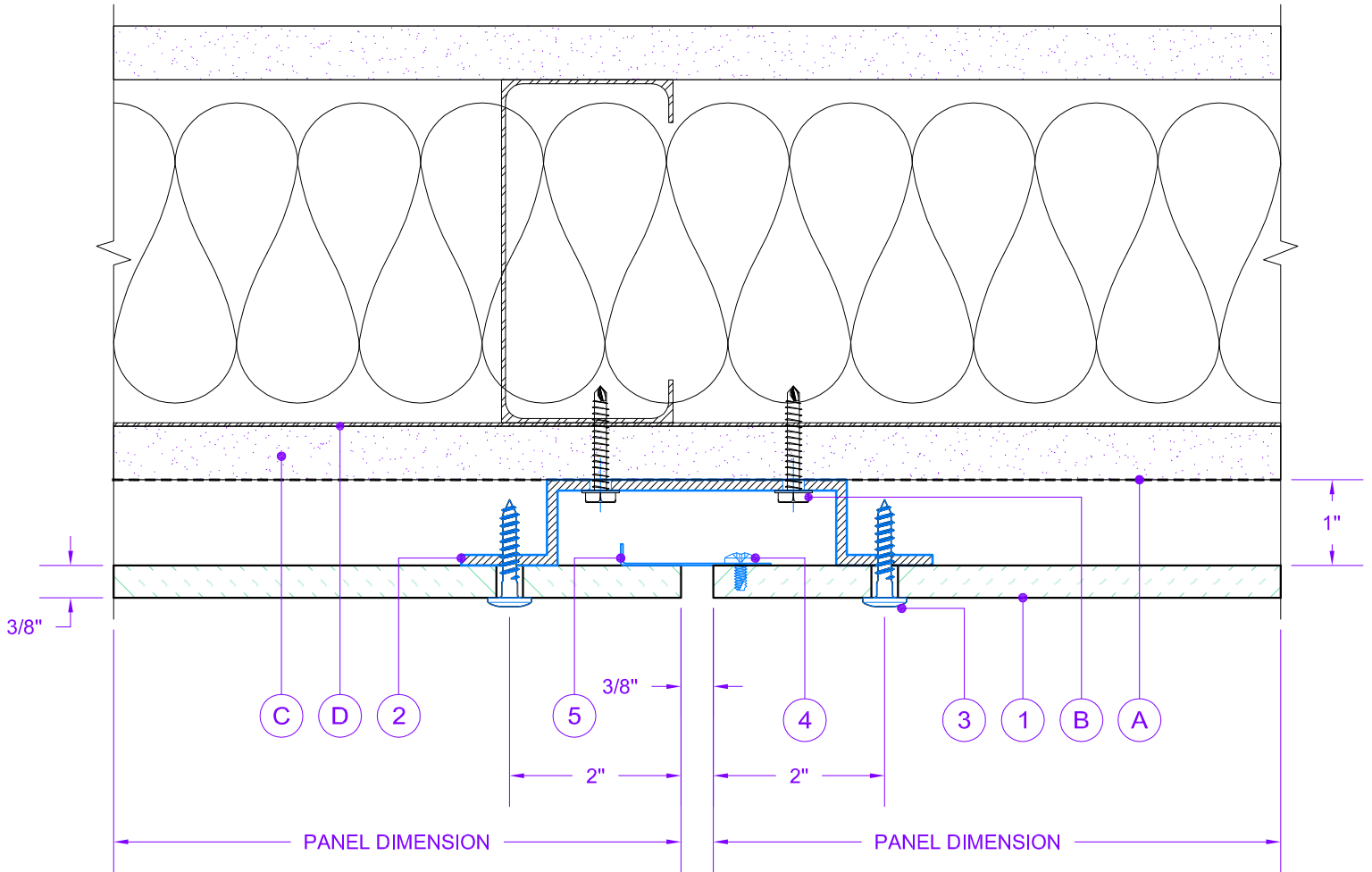
NO.:	DESCRIPTION:
1	TRESPA METEON PANEL (5/8", 3/16" 1/4")
2	HAT CHANNEL
3	PANEL FASTENER
A	APPROVED WRB
B	CHANNEL ANCHOR
C	SHEATHING
D	STEEL BACKING PLATE



ALTIIUM BUILDING CORPORATION
 #103 - 19110 24 Avenue, Surrey, BC V3S 3S9
 T: 604.574.1233 F: 604.560.9554 E: info@altiumbuildingcorp.com
 www.altiumbuildingcorp.com

DRAWING TITLE:
 VERTICAL PANEL JOINT

DETAIL NO.:
 4 OF 17



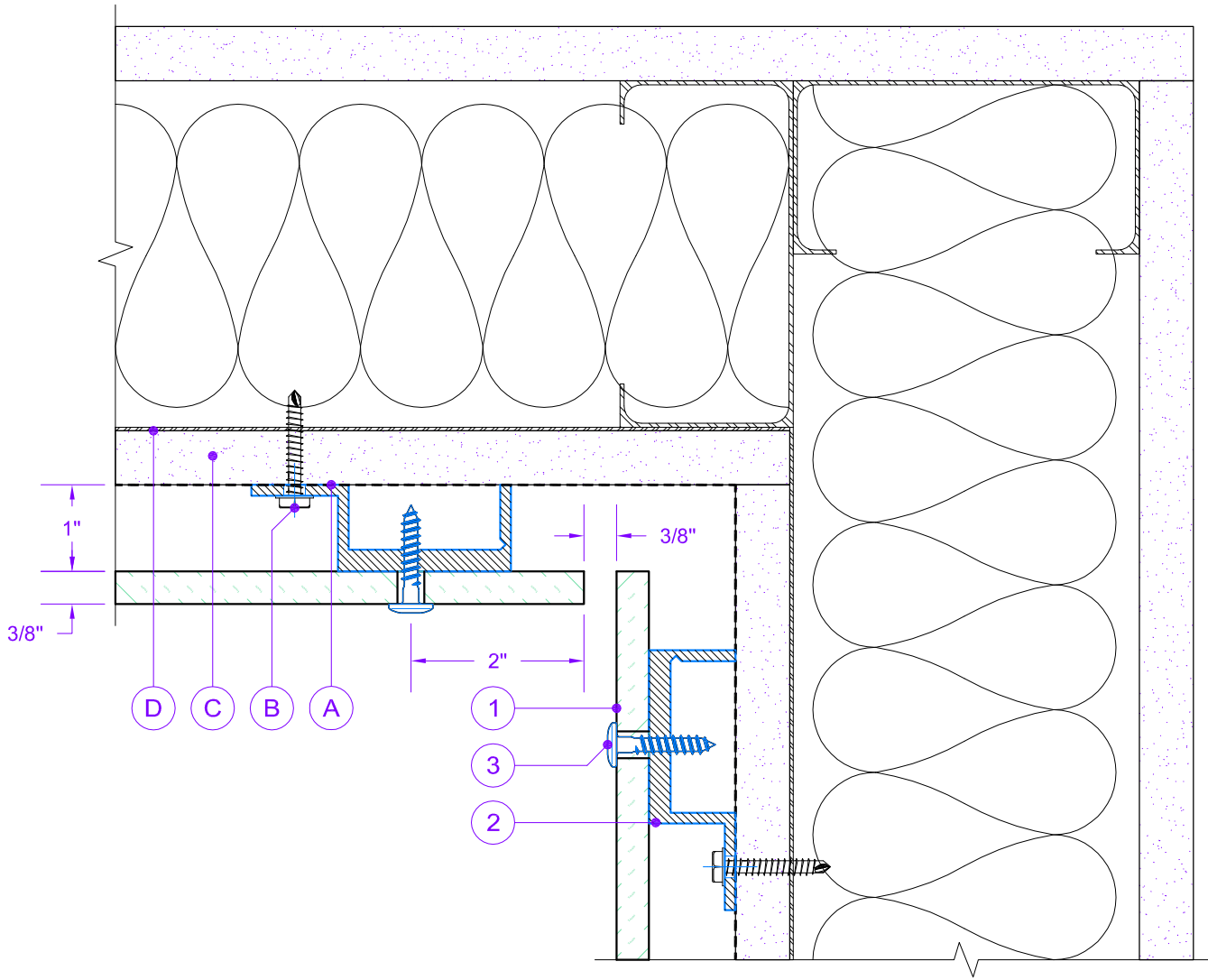
NO.:	DESCRIPTION:
1	TRESPA METEON PANEL (5/8", 3/16" 1/4")
2	HAT CHANNEL
3	PANEL FASTENER
4	CLIP ANCHOR
5	JOINT CLOSURE
A	APPROVED WRB
B	CHANNEL ANCHOR
C	SHEATHING
D	STEEL BACKING PLATE



ALTIIUM BUILDING CORPORATION
 #103 - 19110 24 Avenue, Surrey, BC V3S 3S9
 T: 604.574.1233 F: 604.560.9554 E: info@altiumbuildingcorp.com
 www.altiumbuildingcorp.com

DRAWING TITLE:
 VERTICAL PANEL JOINT A

DETAIL NO.:
 5 OF 17



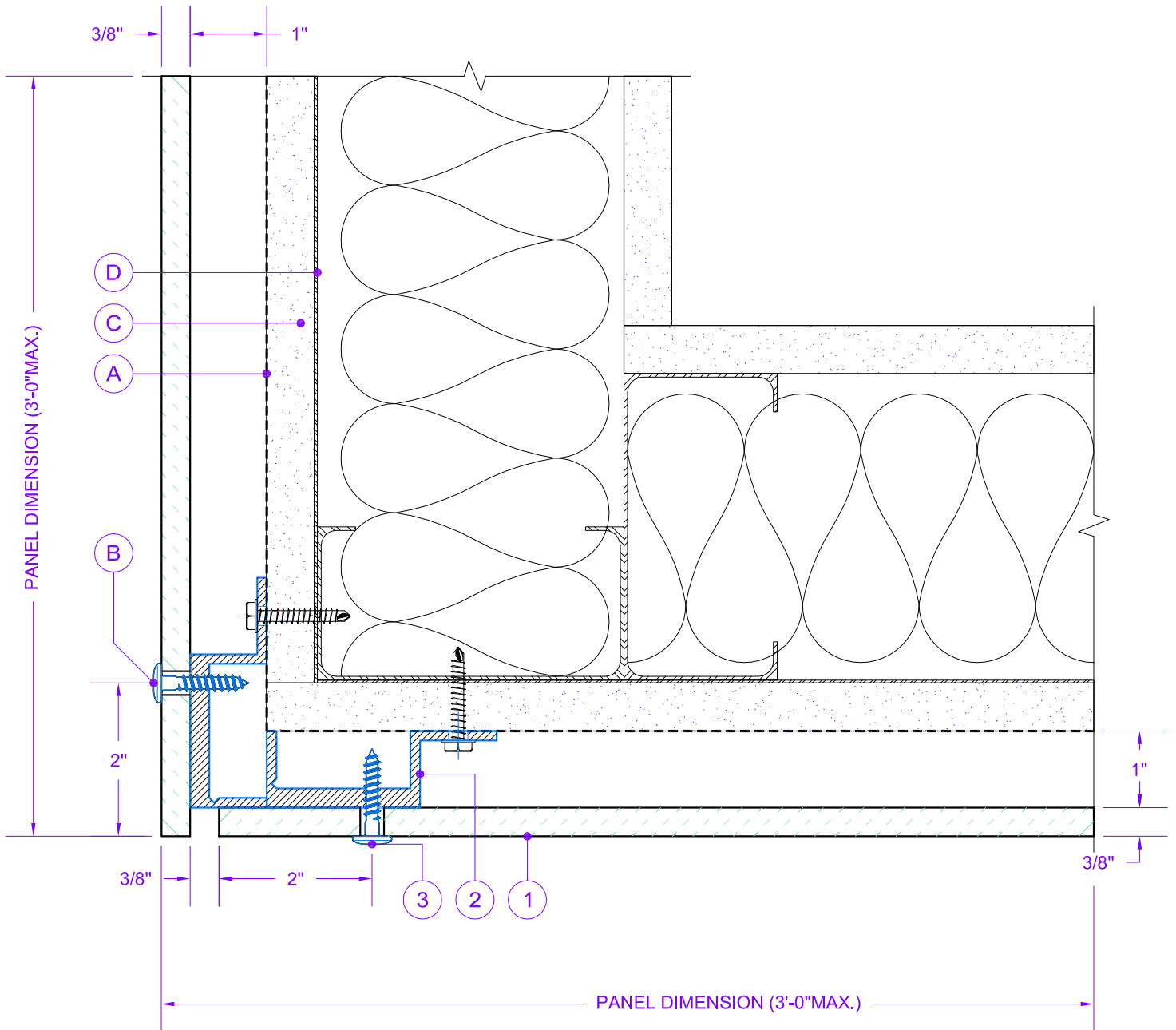
NO.:	DESCRIPTION:
1	TRESPA METEON PANEL (5/8", 3/16" 1/4")
2	HAT CHANNEL
3	PANEL FASTENER
A	APPROVED WRB
B	CHANNEL ANCHOR
C	SHEATHING
D	STEEL BACKING PLATE



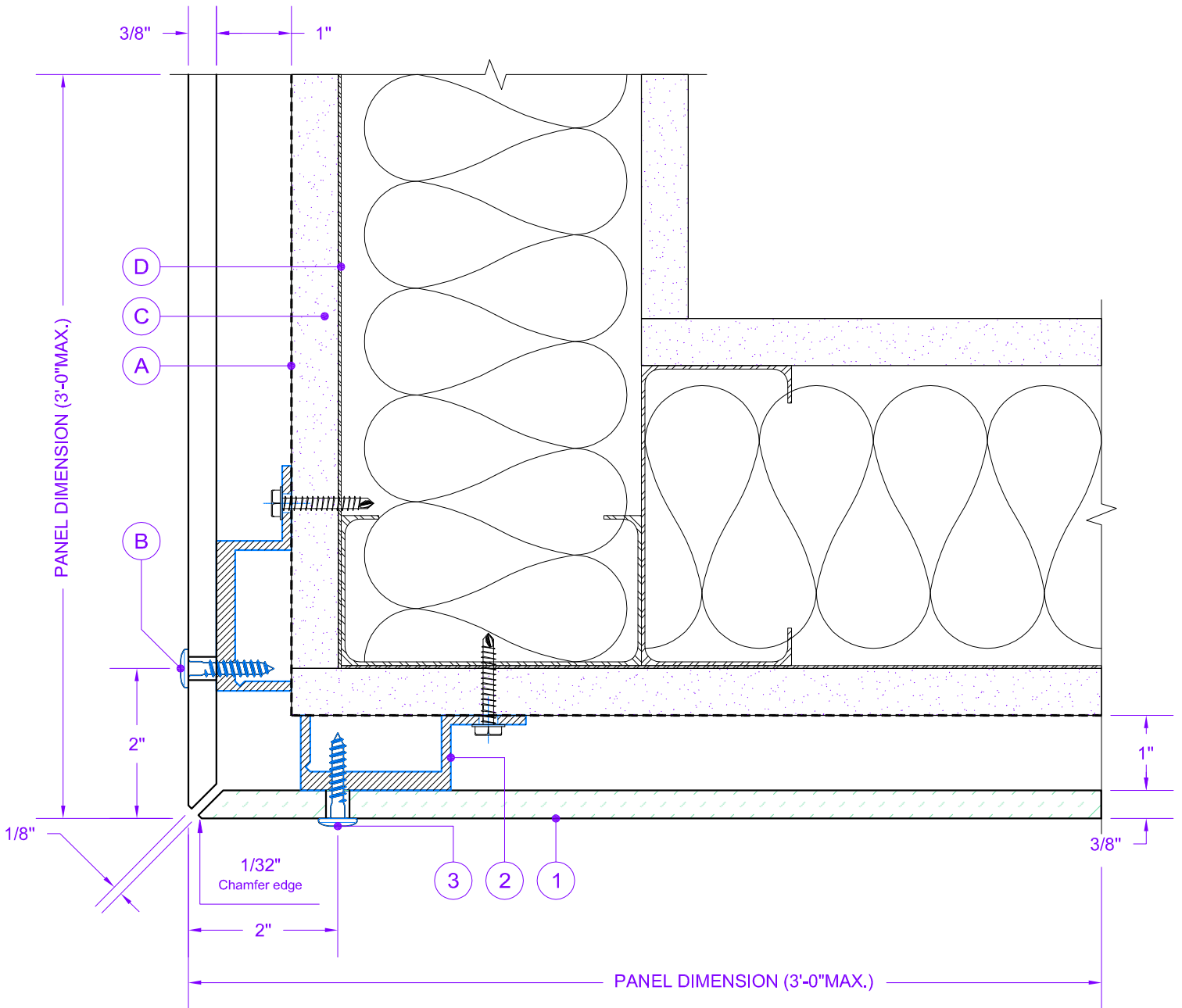
#103 - 19110 24 Avenue, Surrey, BC V3S 3S9
 T: 604.574.1233 F: 604.560.9554 E: info@altiumbuildingcorp.com
 www.altiumbuildingcorp.com

DRAWING TITLE:
 INSIDE CORNER

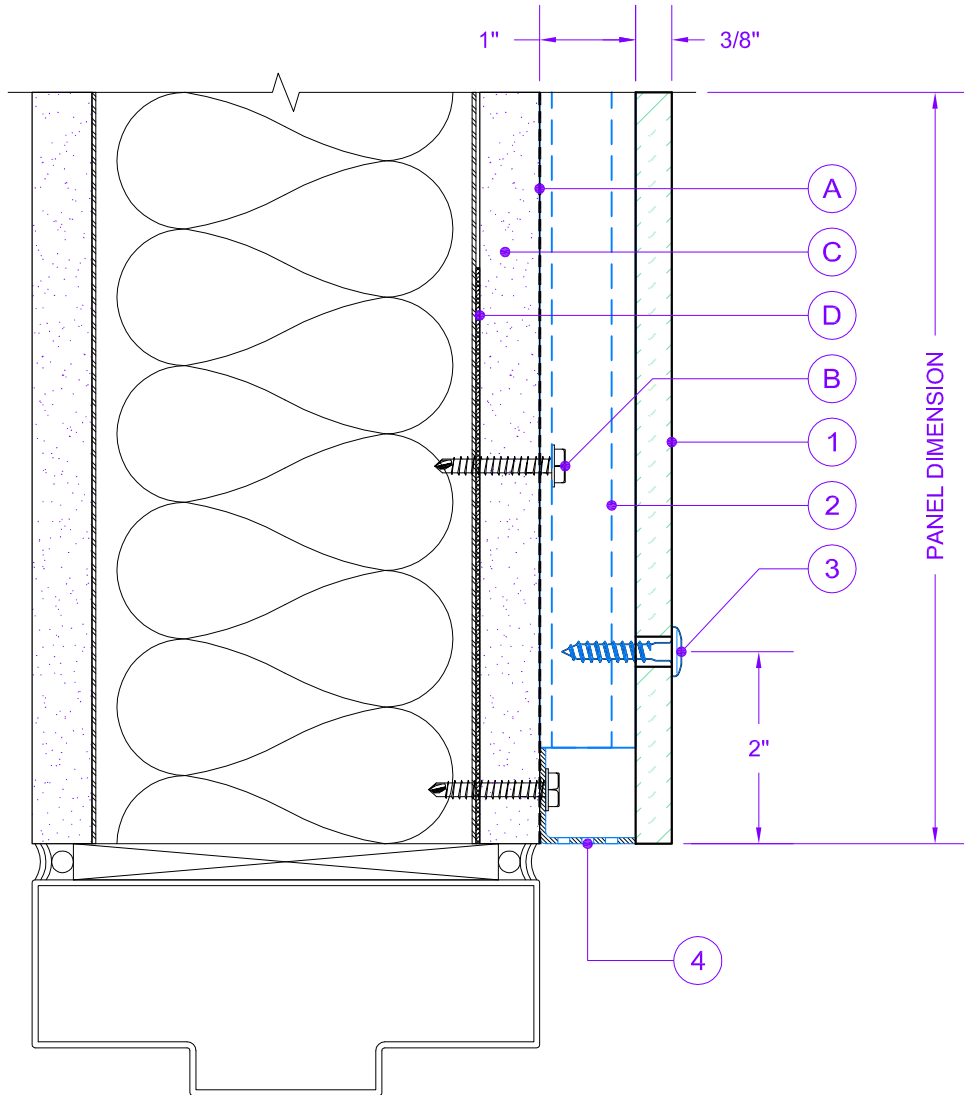
DETAIL NO.:
 6 OF 17



NO.:	DESCRIPTION:
1	TRESPA METEON PANEL (5/8", 3/16" 1/4")
2	HAT CHANNEL
3	PANEL FASTENER
A	APPROVED WRB
B	CHANNEL ANCHOR
C	SHEATHING
D	STEEL BACKING PLATE



NO.:	DESCRIPTION:
1	TRESPA METEON PANEL (5/8", 3/16" 1/4")
2	HAT CHANNEL
3	PANEL FASTENER
A	APPROVED WRB
B	CHANNEL ANCHOR
C	SHEATHING
D	STEEL BACKING PLATE



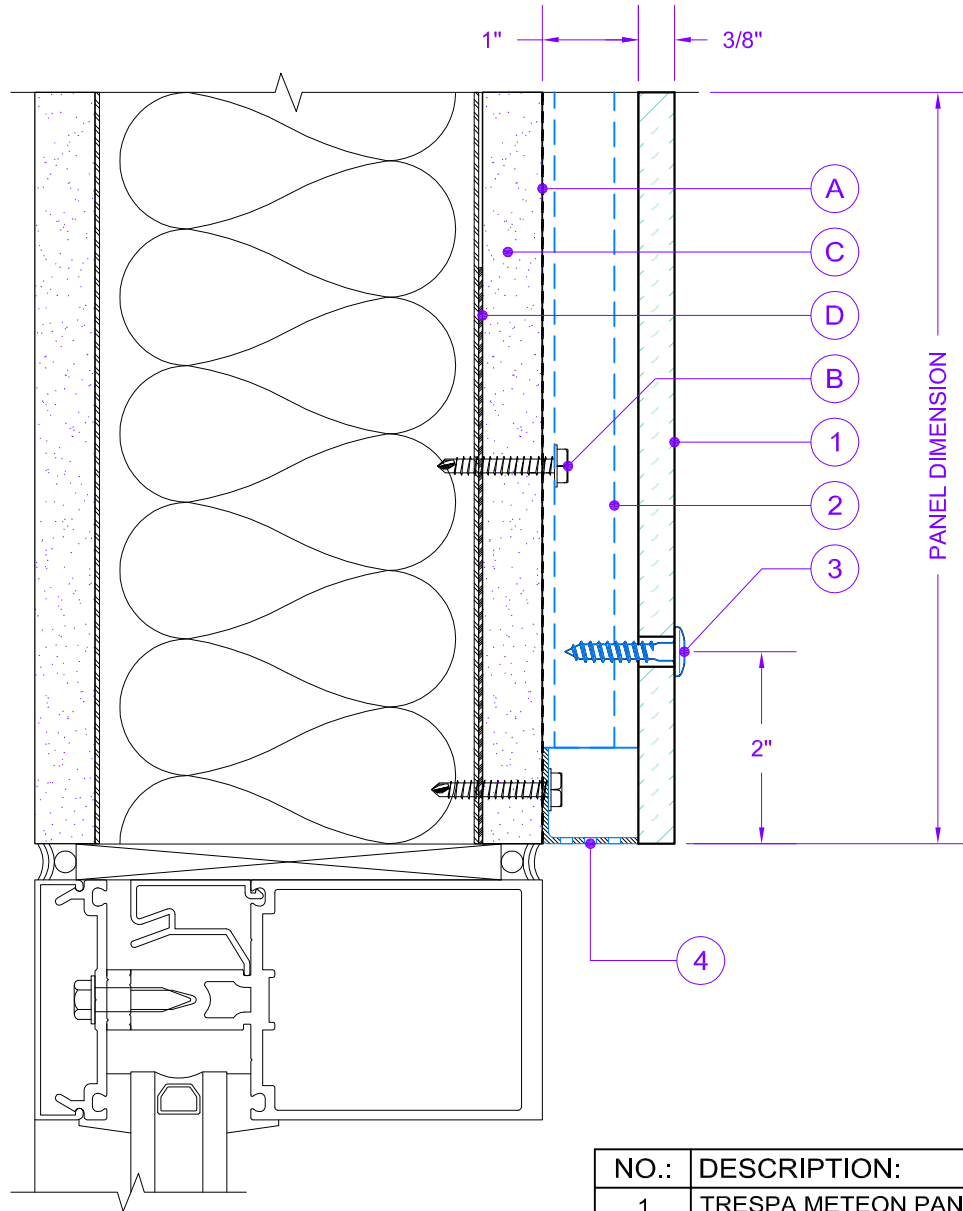
NO.:	DESCRIPTION:
1	TRESPA METEON PANEL (5/8", 3/16" 1/4")
2	J-CHANNEL
3	PANEL FASTENER
4	VENT SCREEN
A	APPROVED WRB
B	CHANNEL ANCHOR
C	SHEATHING
D	STEEL BACKING PLATE



#103 - 19110 24 Avenue, Surrey, BC V3S 3S9
 T: 604.574.1233 F: 604.560.9554 E: info@altiumbuildingcorp.com
 www.altiumbuildingcorp.com

DRAWING TITLE:
 DOOR HEAD

DETAIL NO.:
 9 OF 17



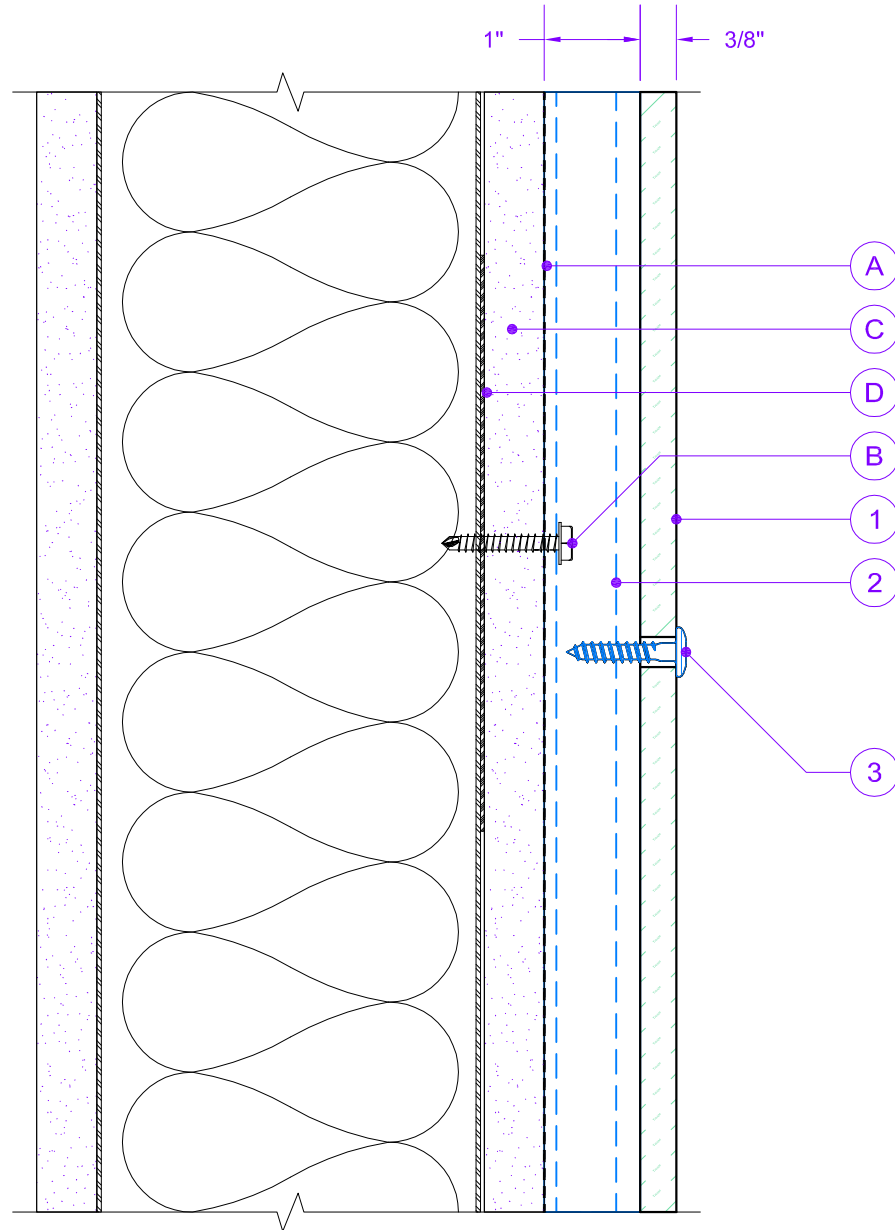
NO.:	DESCRIPTION:
1	TRESPA METEON PANEL (5/8", 3/16" 1/4")
2	J-CHANNEL
3	PANEL FASTENER
4	VENT SCREEN
A	APPROVED WRB
B	CHANNEL ANCHOR
C	SHEATHING
D	STEEL BACKING PLATE



ALTIIUM BUILDING CORPORATION
 #103 - 19110 24 Avenue, Surrey, BC V3S 3S9
 T: 604.574.1233 F: 604.560.9554 E: info@altiumbuildingcorp.com
 www.altiumbuildingcorp.com

DRAWING TITLE:
 WINDOW HEAD

DETAIL NO.:
 10 OF 17



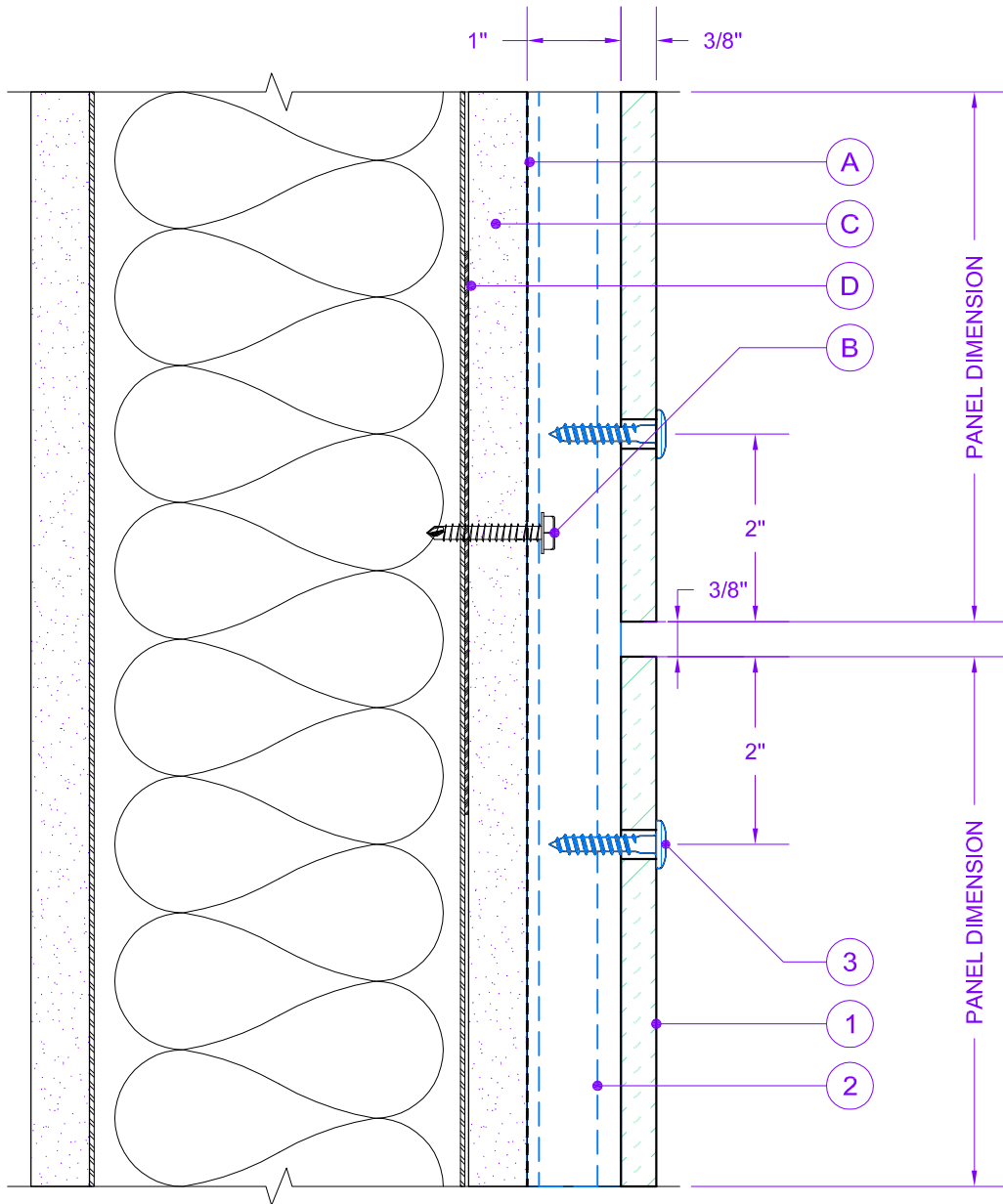
NO.:	DESCRIPTION:
1	TRESPA METEON PANEL (5/8", 3/16" 1/4")
2	J-CHANNEL
3	PANEL FASTENER
A	APPROVED WRB
B	CHANNEL ANCHOR
C	SHEATHING
D	STEEL BACKING PLATE



#103 - 19110 24 Avenue, Surrey, BC V3S 3S9
 T: 604.574.1233 F: 604.560.9554 E: info@altiumbuildingcorp.com
 www.altiumbuildingcorp.com

DRAWING TITLE:
 HORIZONTAL MID-PANEL

DETAIL NO.:
 11 OF 17



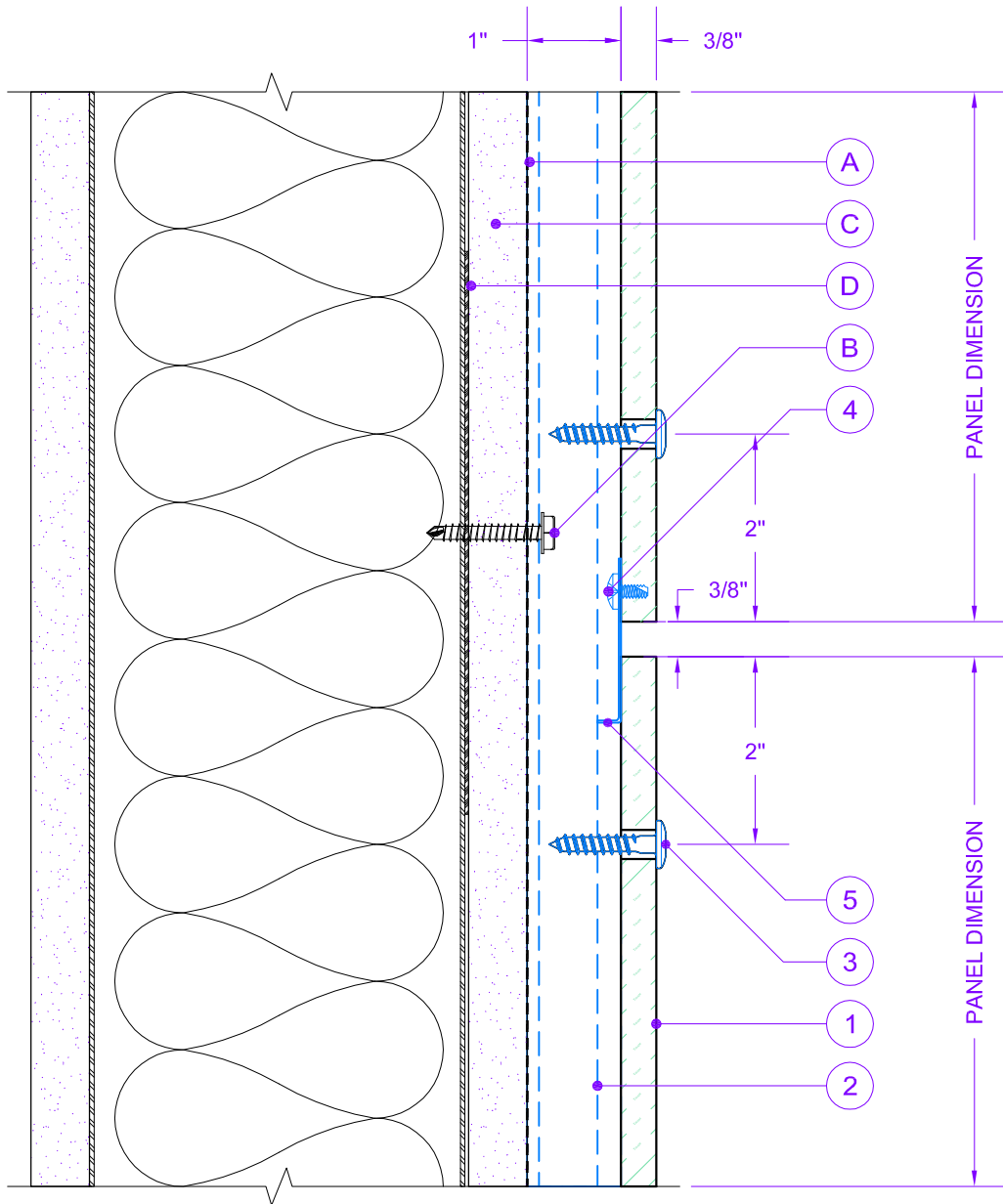
NO.:	DESCRIPTION:
1	TRESPA METEON PANEL (5/8", 3/16" 1/4")
2	J-CHANNEL
3	PANEL FASTENER
A	APPROVED WRB
B	CHANNEL ANCHOR
C	SHEATHING
D	STEEL BACKING PLATE



#103 - 19110 24 Avenue, Surrey, BC V3S 3S9
 T: 604.574.1233 F: 604.560.9554 E: info@altiumbuildingcorp.com
 www.altiumbuildingcorp.com

DRAWING TITLE:
 HORIZONTAL PANEL JOINT

DETAIL NO.:
 12 OF 17



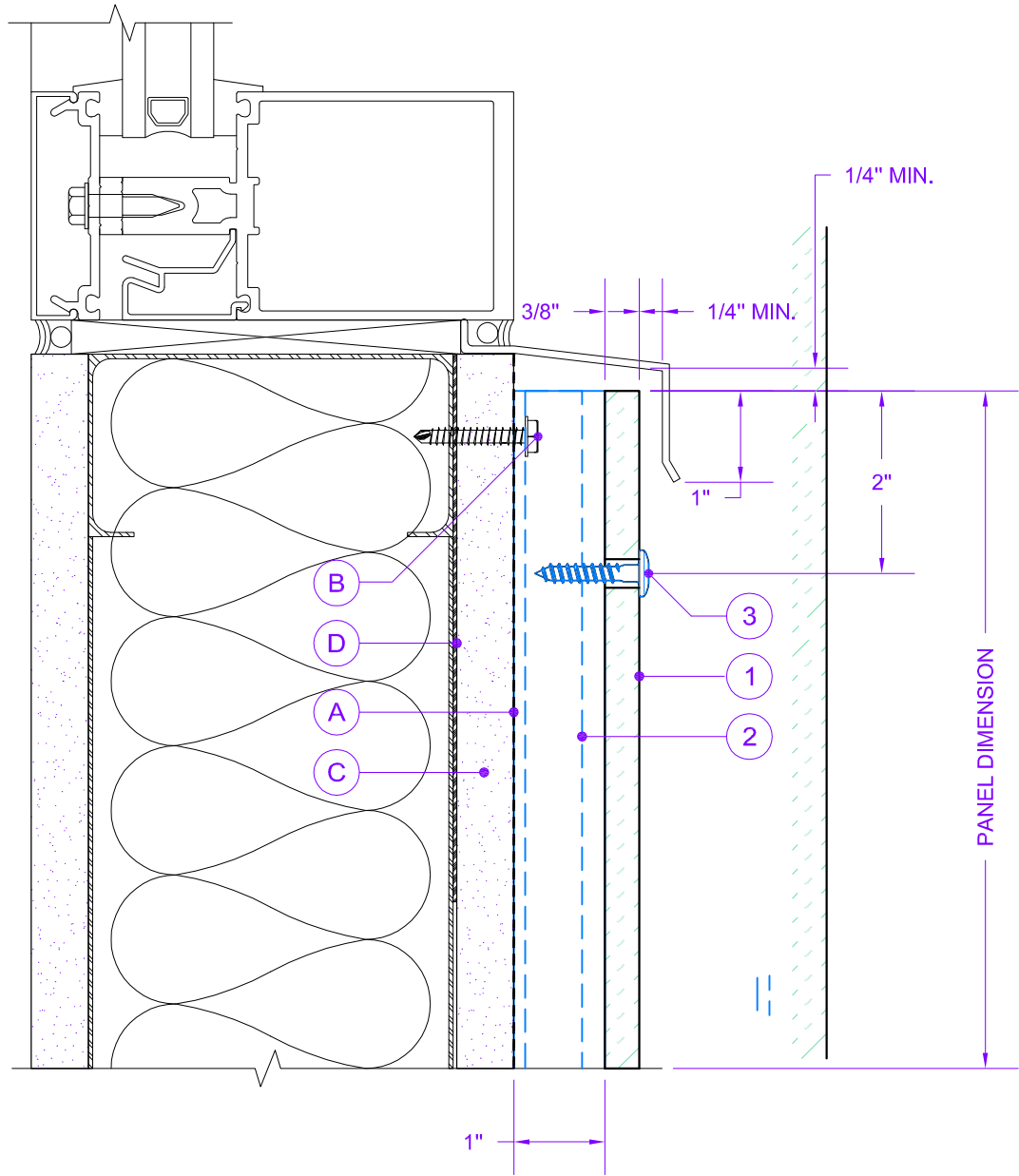
NO.:	DESCRIPTION:
1	TRESPA METEON PANEL (5/8", 3/16" 1/4")
2	HAT CHANNEL
3	PANEL FASTENER
4	CLIP ANCHOR
5	JOINT CLOSURE
A	APPROVED WRB
B	CHANNEL ANCHOR
C	SHEATHING
D	STEEL BACKING PLATE



ALTUM BUILDING CORPORATION
 #103 - 19110 24 Avenue, Surrey, BC V3S 3S9
 T: 604.574.1233 F: 604.560.9554 E: info@altiumbuildingcorp.com
 www.altiumbuildingcorp.com

DRAWING TITLE:
 HORIZONTAL PANEL JOINT A

DETAIL NO.:
 13 OF 17



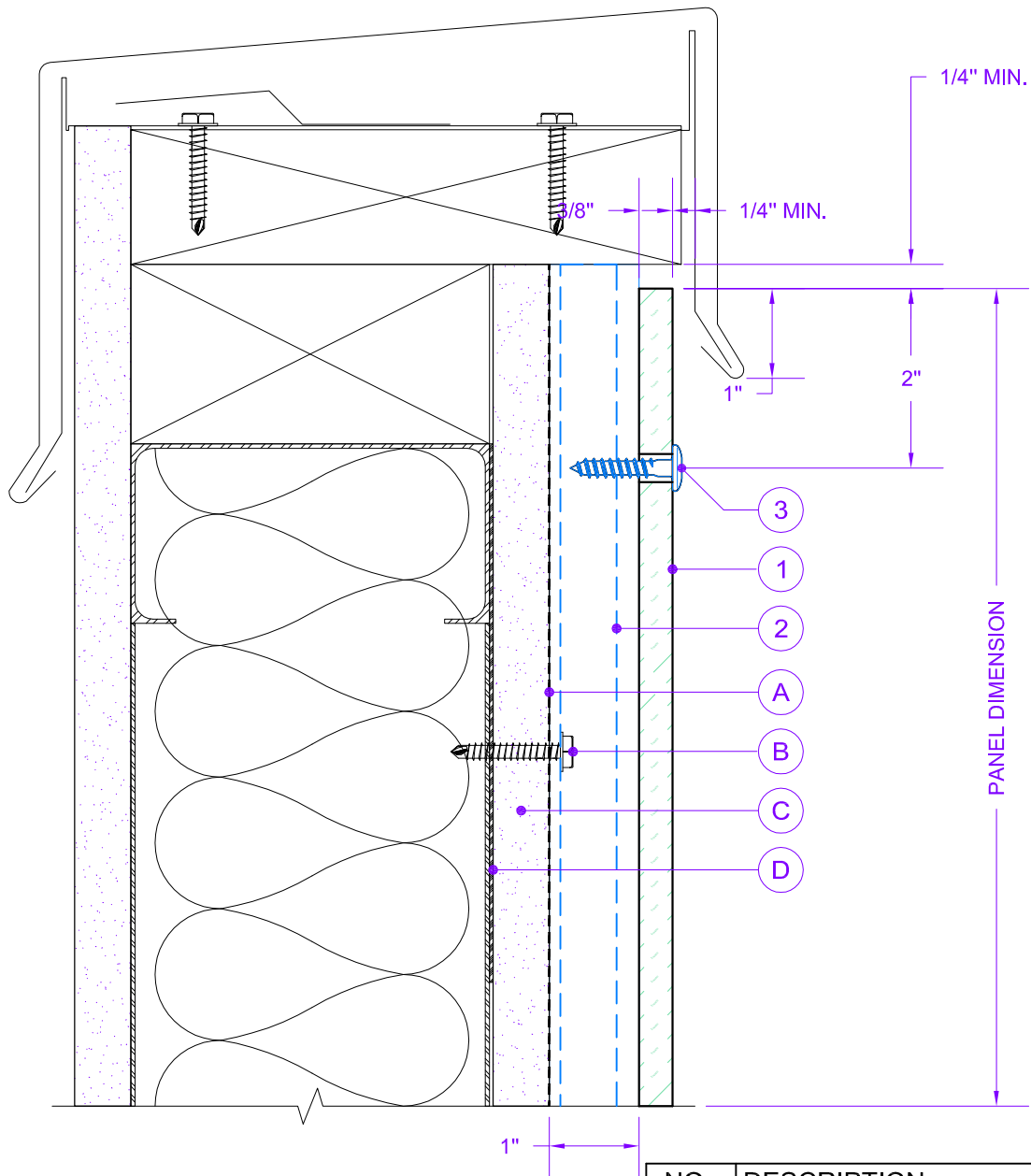
NO.:	DESCRIPTION:
1	TRESPA METEON PANEL (5/8", 3/16" 1/4")
2	J-CHANNEL
3	PANEL FASTENER
A	APPROVED WRB
B	CHANNEL ANCHOR
C	SHEATHING
D	STEEL BACKING PLATE



#103 - 19110 24 Avenue, Surrey, BC V3S 3S9
 T: 604.574.1233 F: 604.560.9554 E: info@altiumbuildingcorp.com
 www.altiumbuildingcorp.com

DRAWING TITLE:
 WINDOW SILL

DETAIL NO.:
 14 OF 17



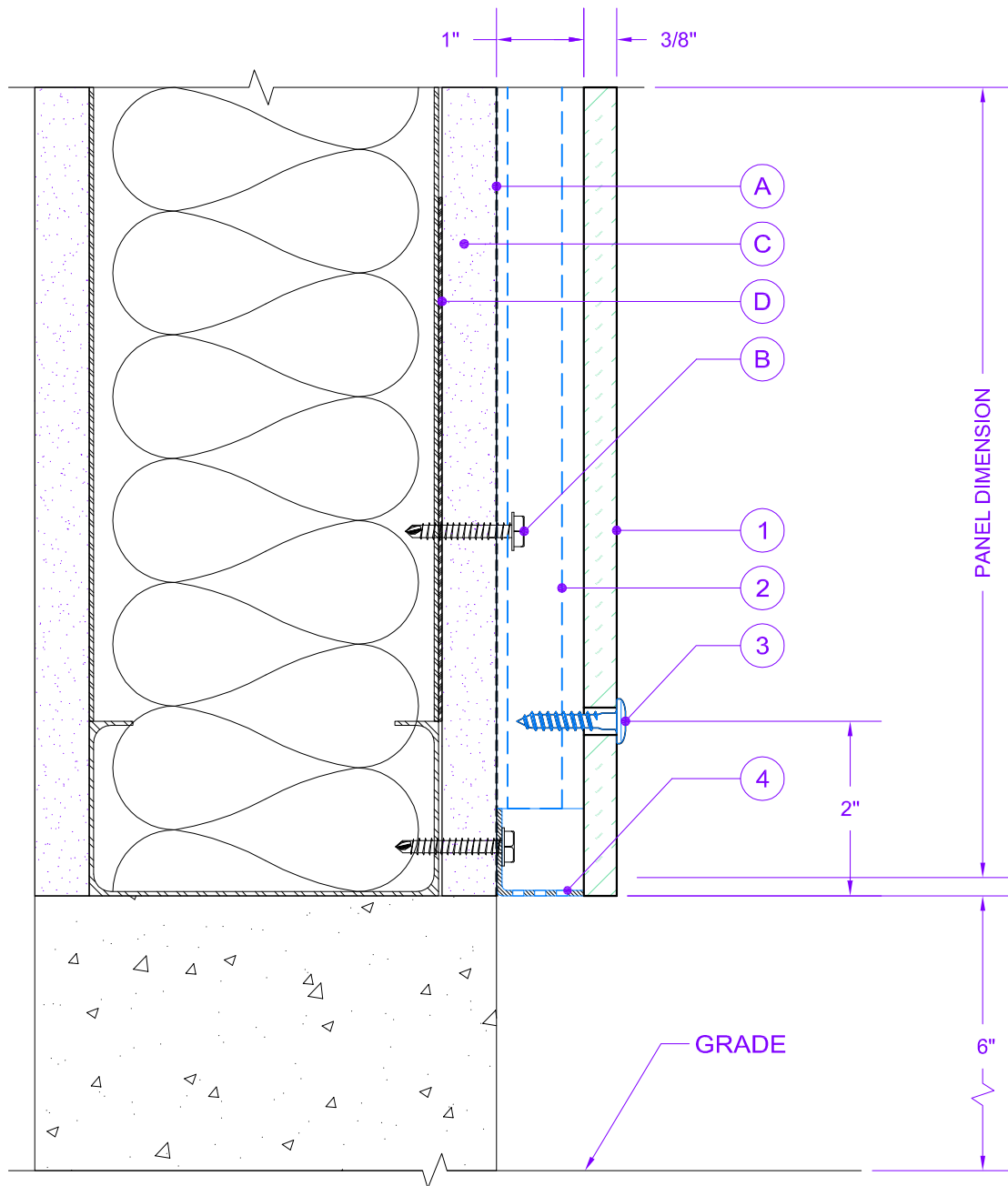
NO.:	DESCRIPTION:
1	TRESPA METEON PANEL (5/8", 3/16" 1/4")
2	J-CHANNEL
3	PANEL FASTENER
A	APPROVED WRB
B	CHANNEL ANCHOR
C	SHEATHING
D	STEEL BACKING PLATE



ALTIIUM BUILDING CORPORATION
 #103 - 19110 24 Avenue, Surrey, BC V3S 3S9
 T: 604.574.1233 F: 604.560.9554 E: info@altiumbuildingcorp.com
 www.altiumbuildingcorp.com

DRAWING TITLE:
 PARAPET CAP

DETAIL NO.:
 15 OF 17



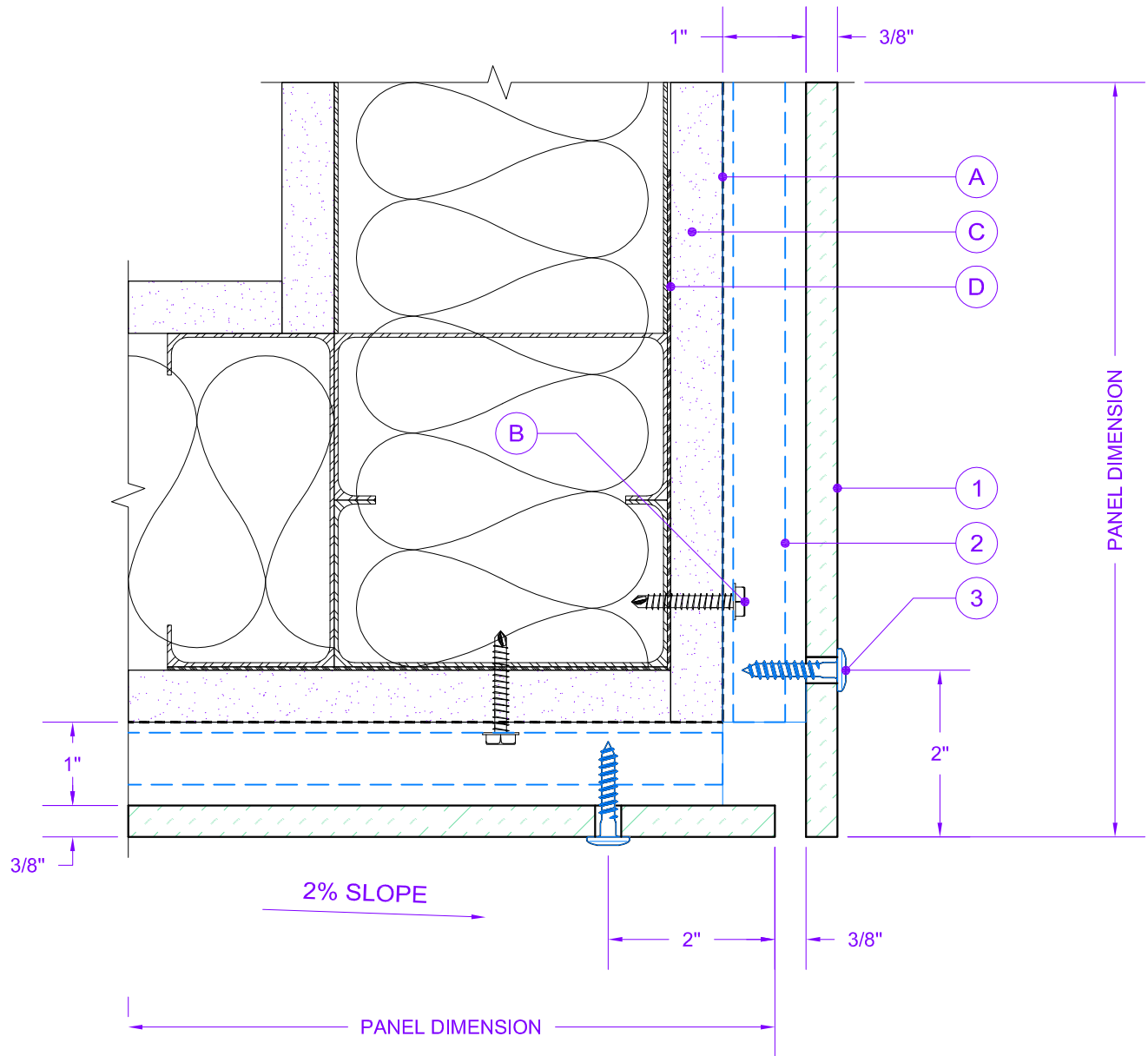
NO.:	DESCRIPTION:
1	TRESPA METEON PANEL (5/8", 3/16" 1/4")
2	J-CHANNEL
3	PANEL FASTENER
4	VENT SCREEN
A	APPROVED WRB
B	CHANNEL ANCHOR
C	SHEATHING
D	STEEL BACKING PLATE



ALTIIUM BUILDING CORPORATION
 #103 - 19110 24 Avenue, Surrey, BC V3S 3S9
 T: 604.574.1233 F: 604.560.9554 E: info@altiumbuildingcorp.com
 www.altiumbuildingcorp.com

DRAWING TITLE:
 FLOOR BASE MODEL

DETAIL NO.:
 16 OF 17



NO.:	DESCRIPTION:
1	TRESPA METEON PANEL (5/8", 3/16" 1/4")
2	J-CHANNEL
3	PANEL FASTENER
A	APPROVED WRB
B	CHANNEL ANCHOR
C	SHEATHING
D	STEEL BACKING PLATE



ALTUM BUILDING CORPORATION

#103 - 19110 24 Avenue, Surrey, BC V3S 3S9
 T: 604.574.1233 F: 604.560.9554 E: info@altiumbuildingcorp.com
 www.altiumbuildingcorp.com

DRAWING TITLE:
 SOFFIT

DETAIL NO.:
 17 OF 17